

Neues Postquartier Ravensburg

art in architecture | artistic design of the staircases | documentation: concept and realisation



spectrum the project



AOK Bodensee-Oberschwaben building in Ravensburg, Charlottenstraße 49 (visualisation : Architekten Berger Röcker)

spectrum conception

The task at hand was to create an artistic installation for two facing staircases in the building of PBA GmbH & Co. KG in Ravensburg designed by the architectural office Berger Röcker (Stuttgart) which is now the administrative seat of the AOK regional head office Bodensee-Oberschwaben.

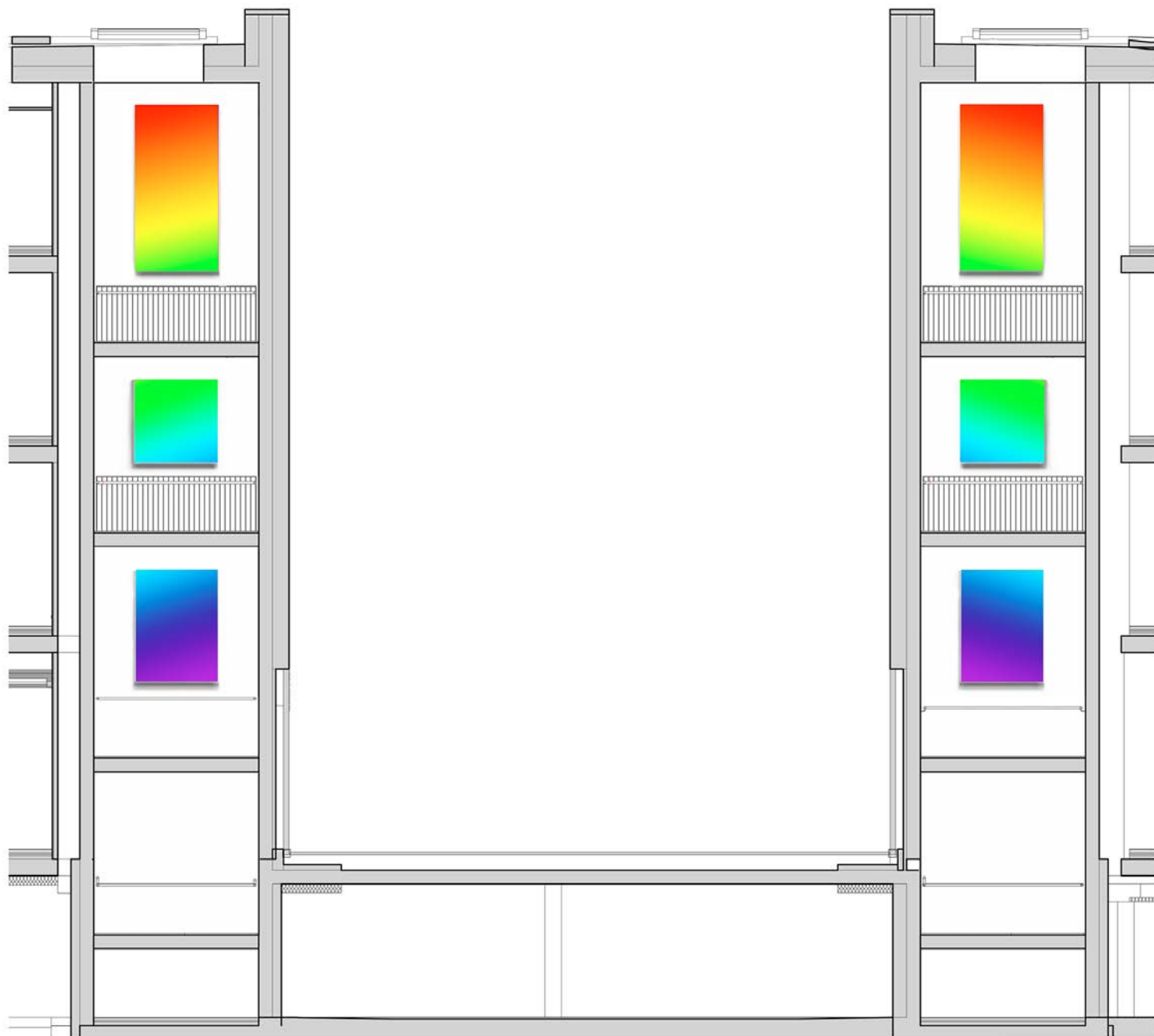
The concepts represented here deal with the topic of light. "spectrum" refers to the colour space of the visible spectral colours. In additive colour mixing the sum of these colours is white light. All concepts feature the motif of the typical gradient of the spectral colours evoking associations ranging from the mythological world to the physical world of science.

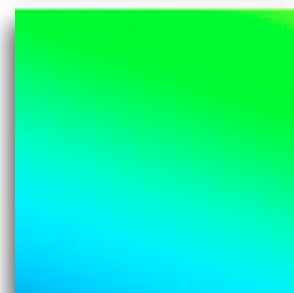
The concepts envision the two staircases as one ensemble and each staircase refers to the other in terms of artistic design. When dealing with one staircase only, the motifs are sufficiently self-contained and are able to stand alone without their counterpart.

spectrum concepts

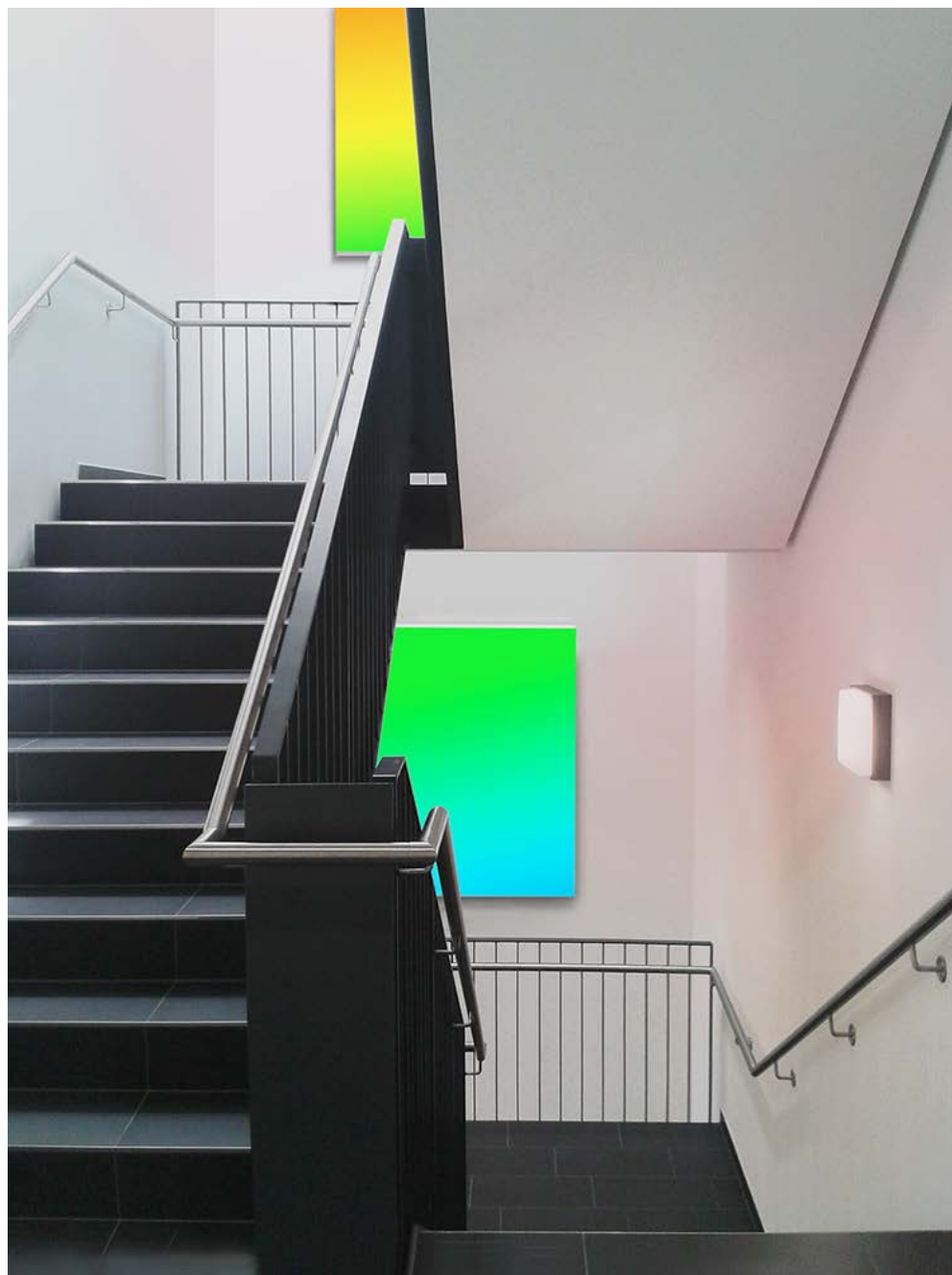
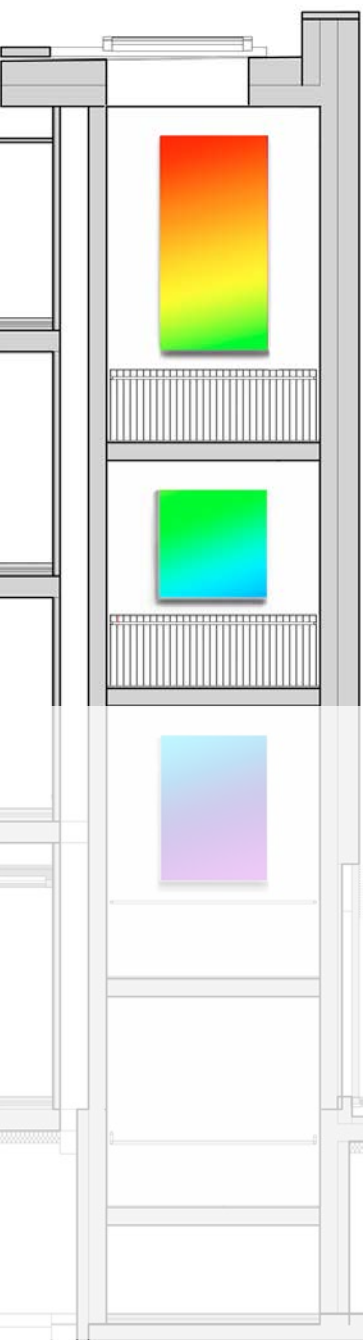
spectrum screen

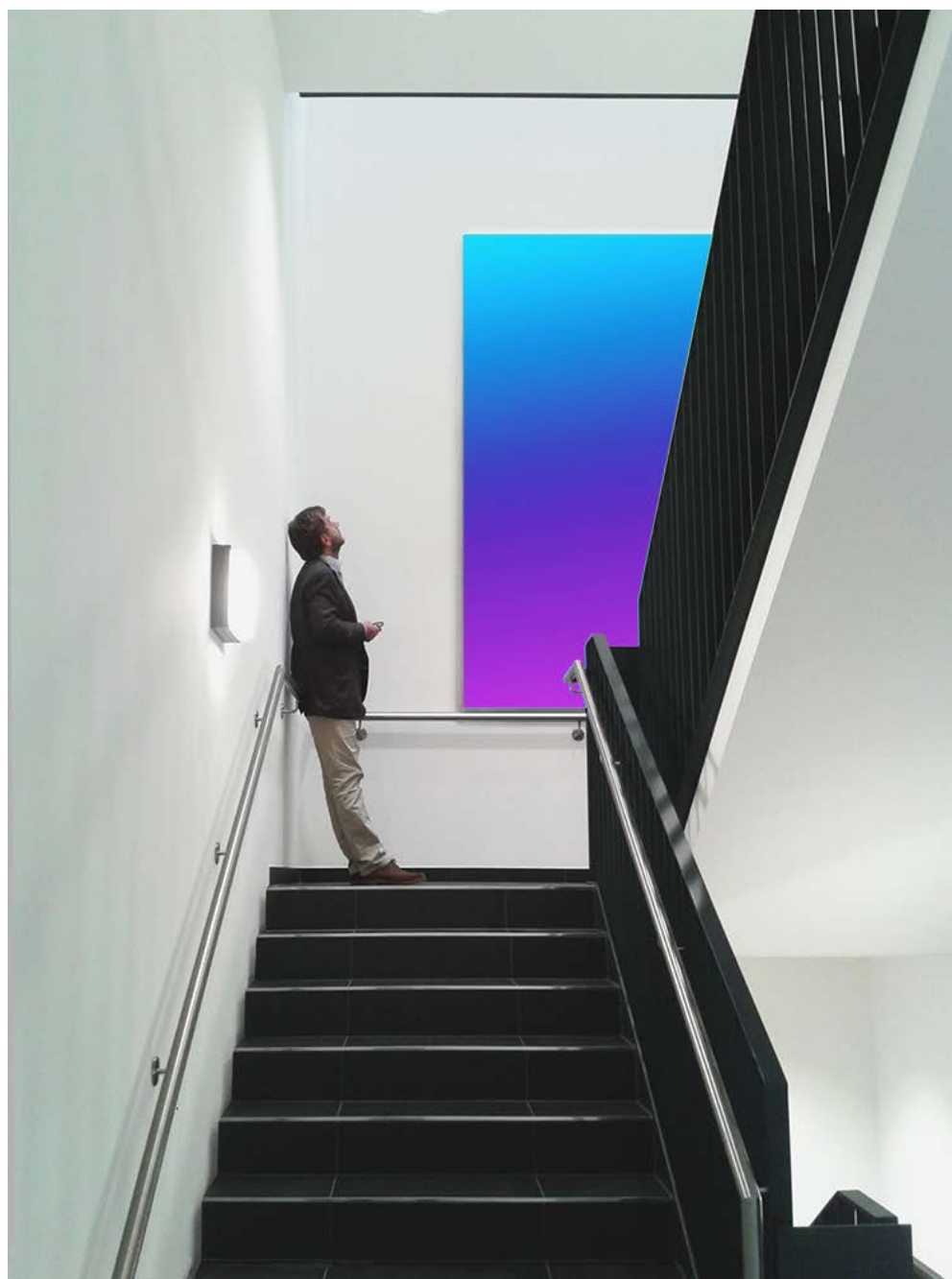
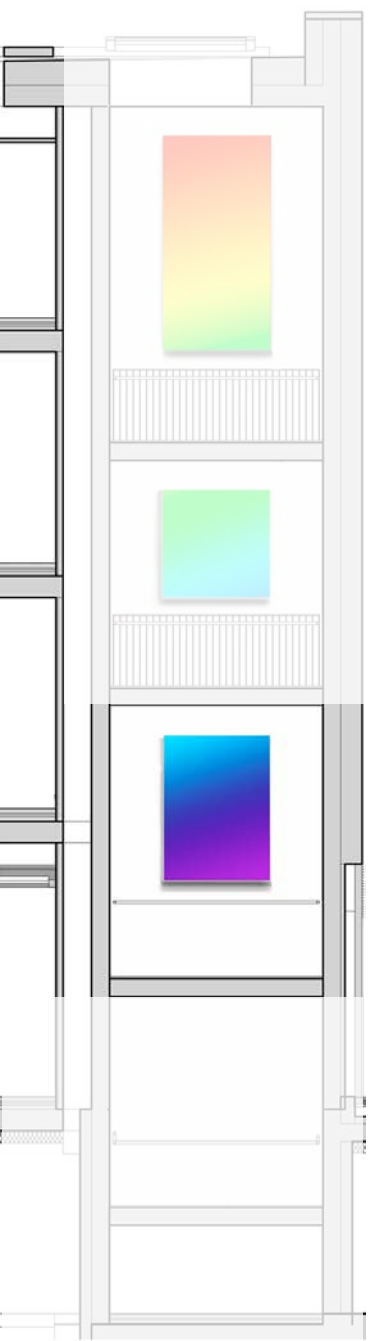
Based on LED technology three (or considering both staircases six) rectangular light boxes are built. A printed textile or an acrylic glass pane with a printed back side is backlit by the LEDs according to the following concepts. The dimensions of the light boxes correspond to the height of the visible wall space between the floors. With a depth of only 10-20 cm and their plain aluminium frames they blend into the modern and elegant architectural concept of the building. Dimmable the LEDs can be adjusted to the corresponding lighting conditions.





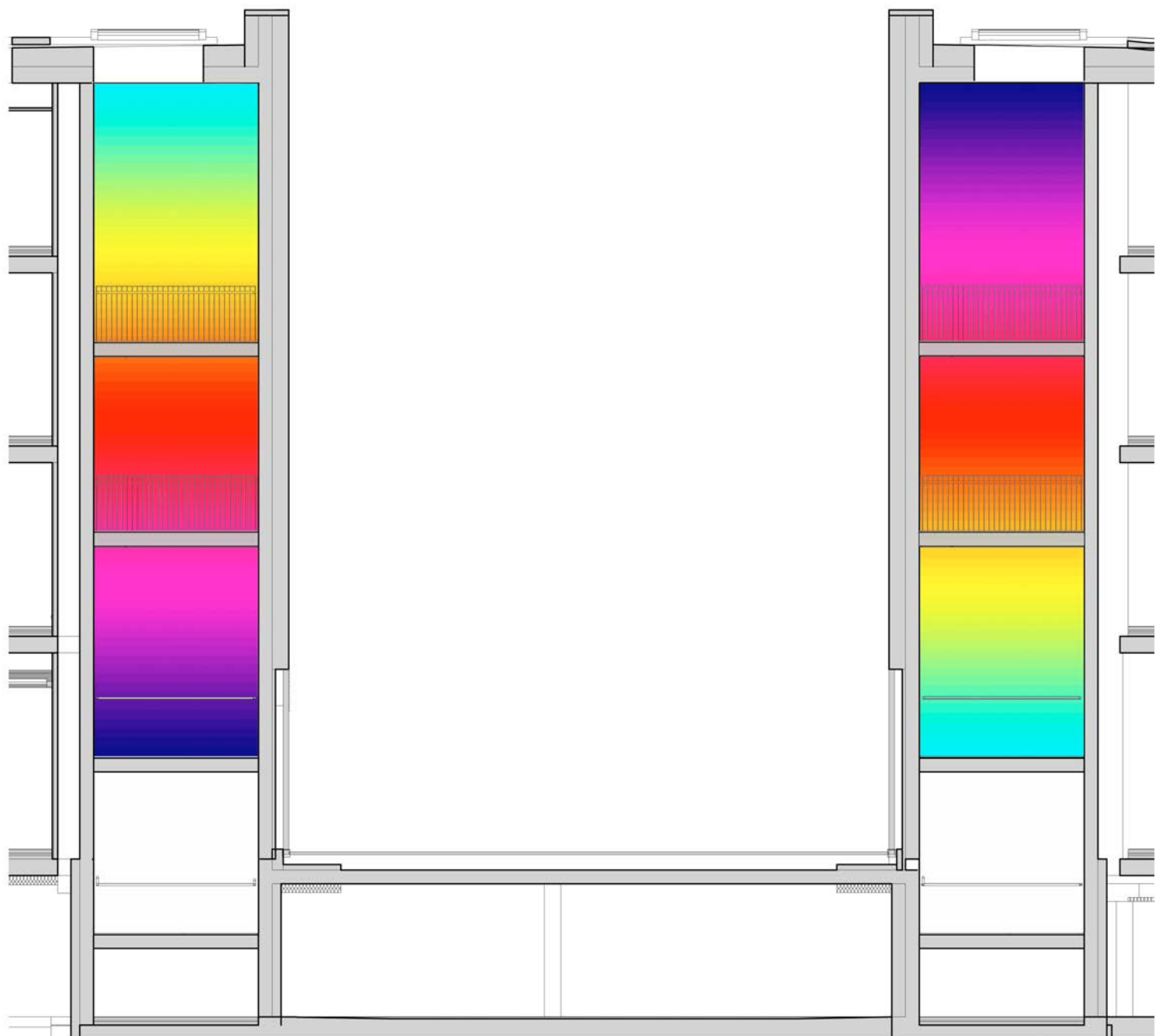




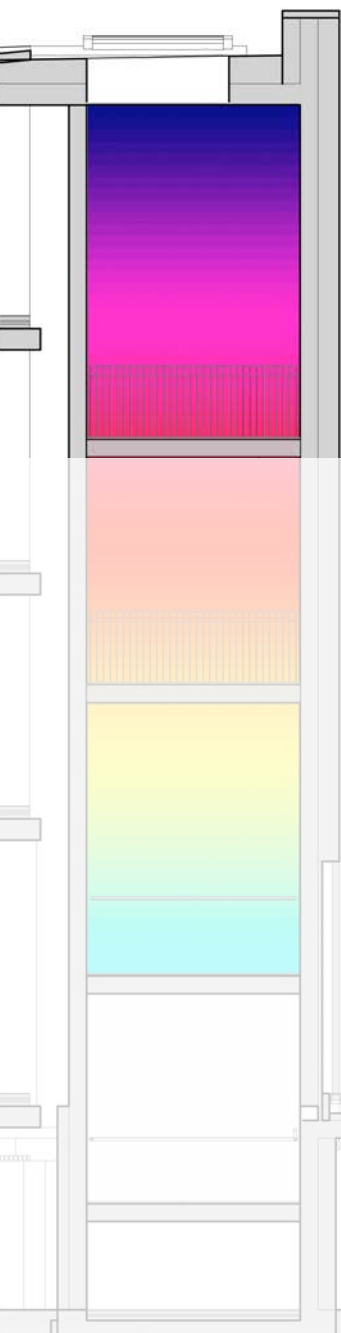


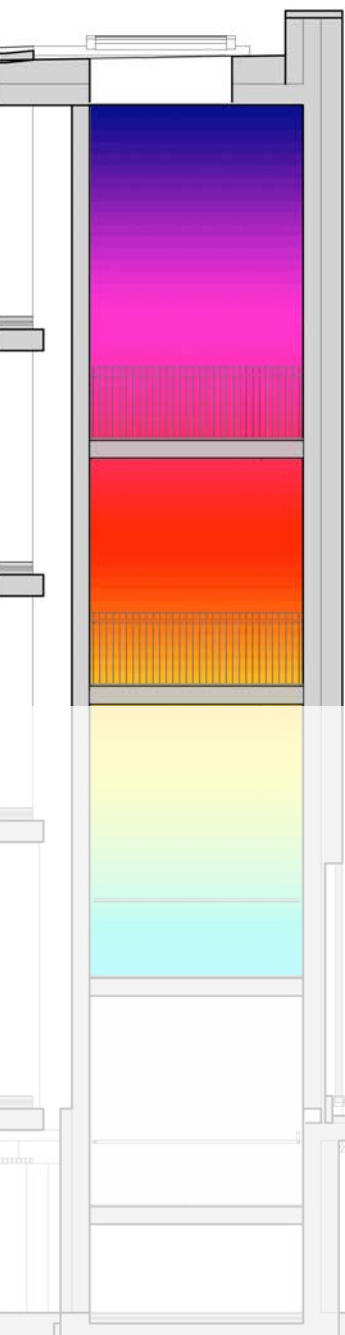
spectrum continuous

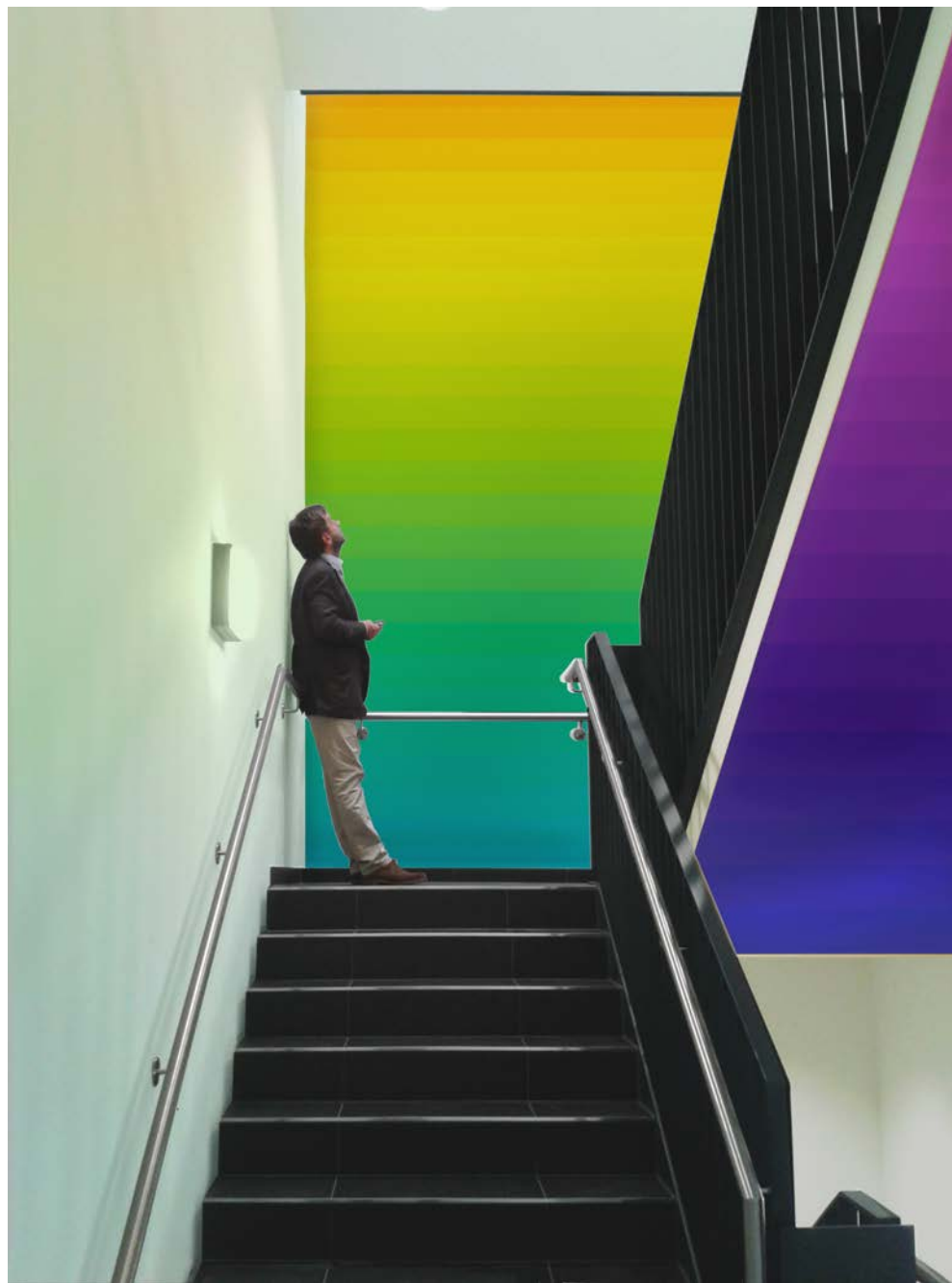
"spectrum continuous" is the original and also the most basic concept in reference to the motif. Across the entire front wall of the staircase a gradient of spectral colours in the form of horizontal stripes is painted. The height of each stripe corresponds to the height of one single stair hence rhythmically structuring the motif. On the bottom of the stairs the front wall motif is flipped horizontally (that is turned about 180°) and in doing so it relates to the wall motif of the second staircase. The result is a play of colours with the gradients meeting in the centre only to head for the respective other end of the colour scale.





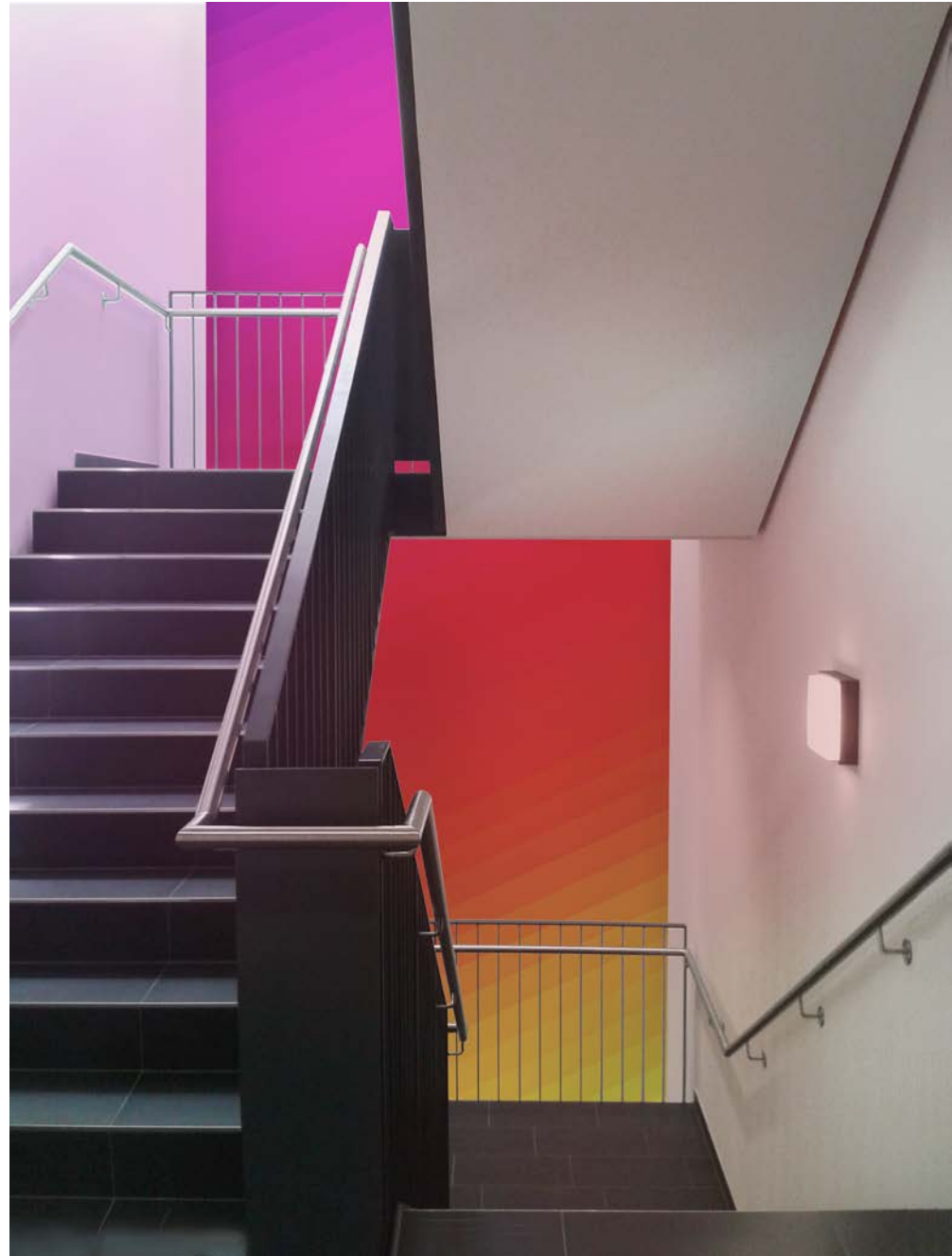






variation

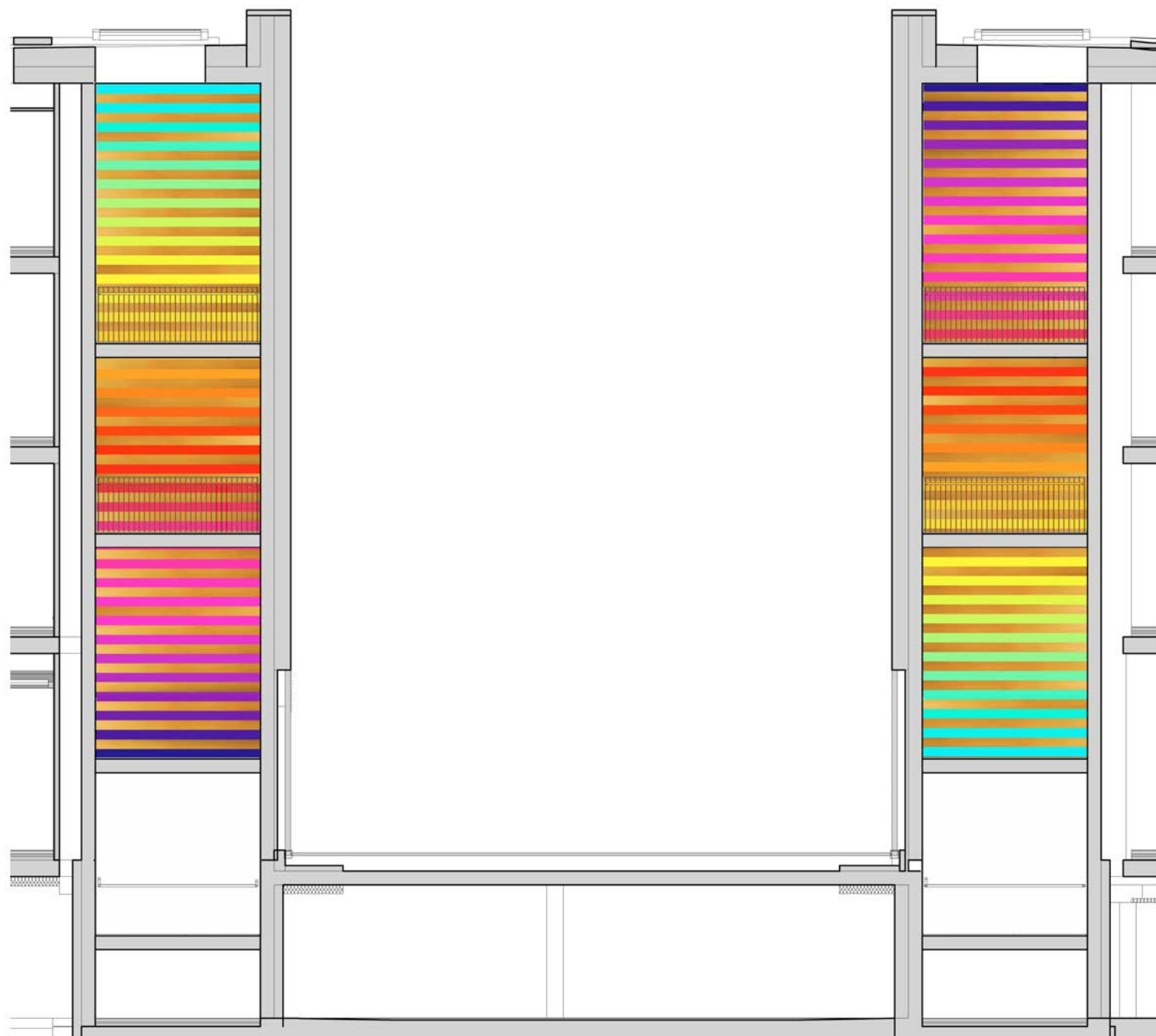
Here the stripes of the wall motif ascend slightly.
This creates a tension between the horizontal and
vertical lines of architecture and the motif.



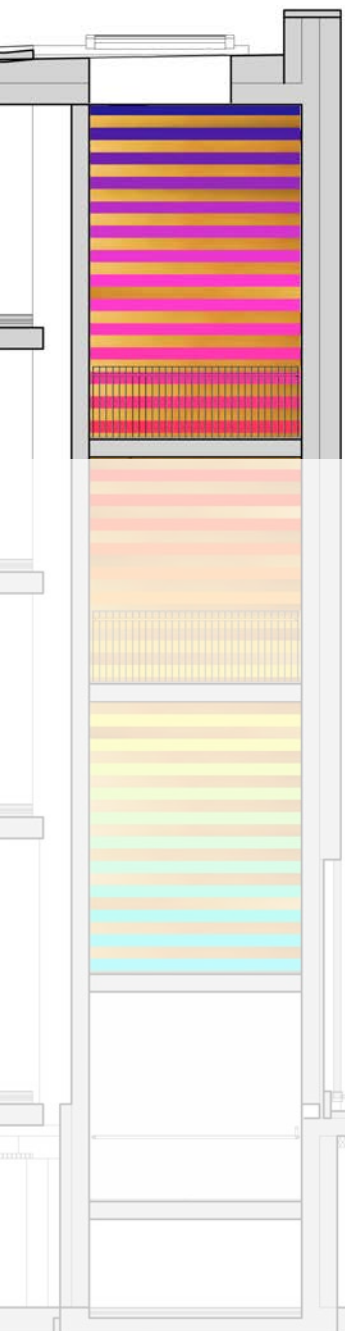
spectrum interrupted

In its basic appearance this concept corresponds to "spectrum continuous", however, it encompasses one further aspect of light - the "colour" of gold. Gold is the symbolic colour for sun and light. The glow and the warmth of light are reflected - in the actual sense of the word - by this metal. Gold is the symbolic sublimation of light.

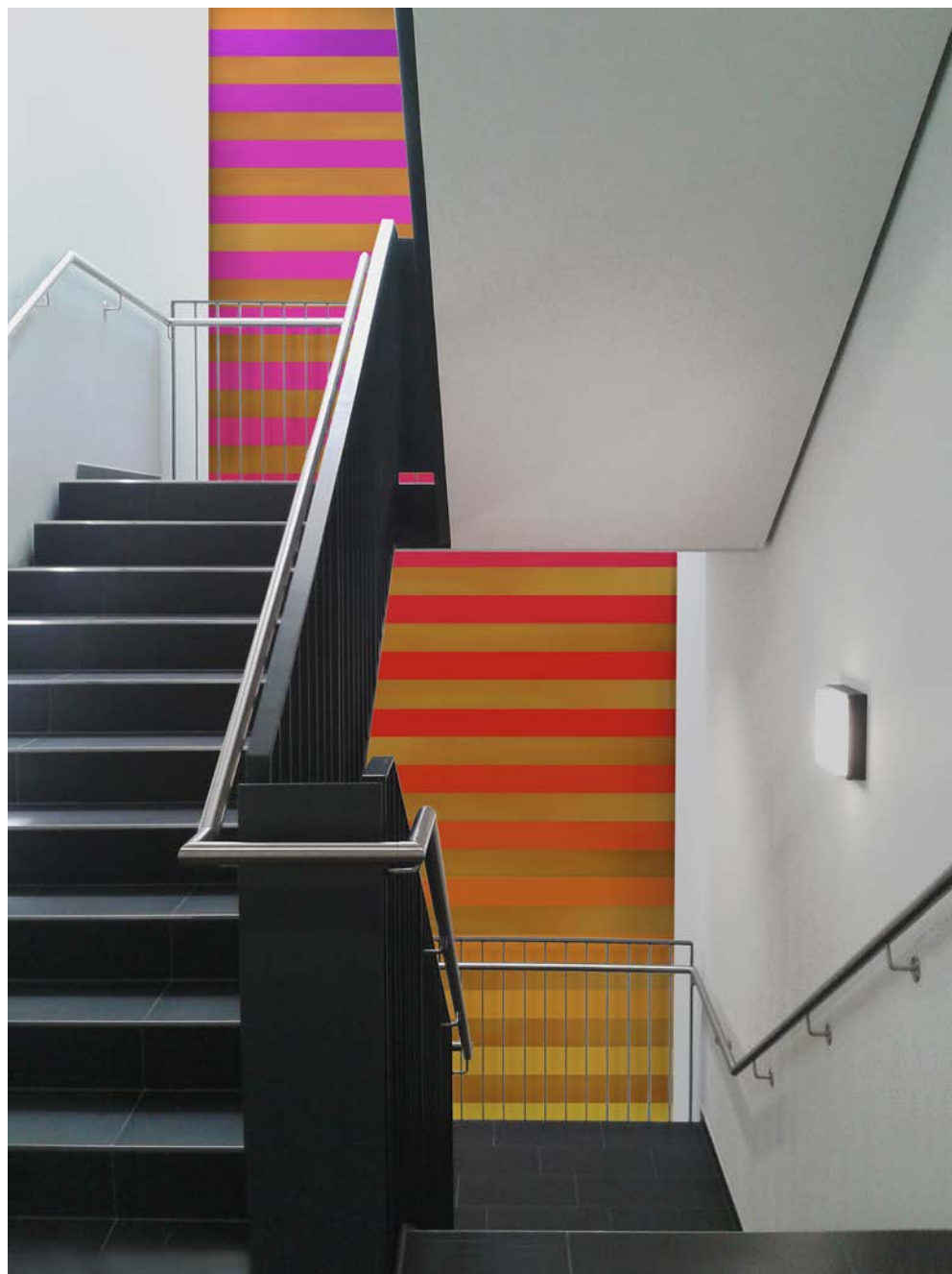
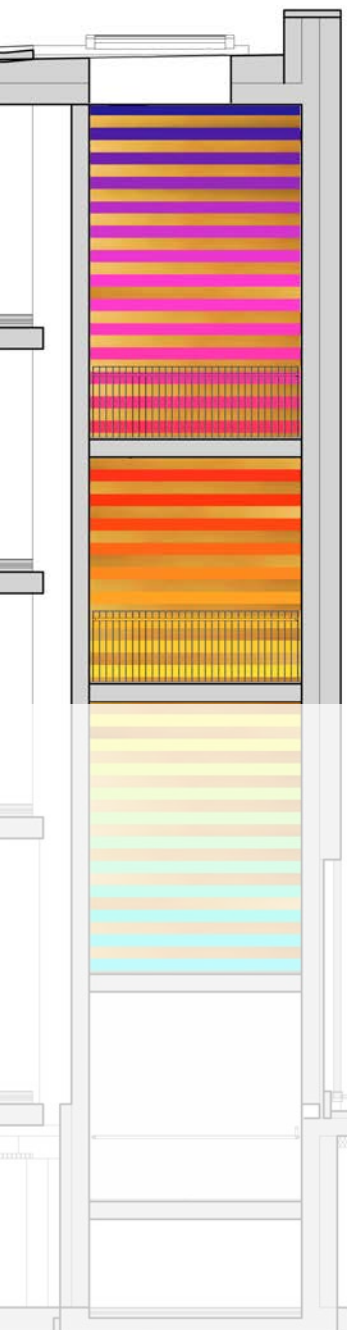
One stripe of gold alternates with one stripe of colour of the spectral gradient. The golden stripes take the effect of an architectural element - the coloured stripes in between seem like windows into the spectral colour space.

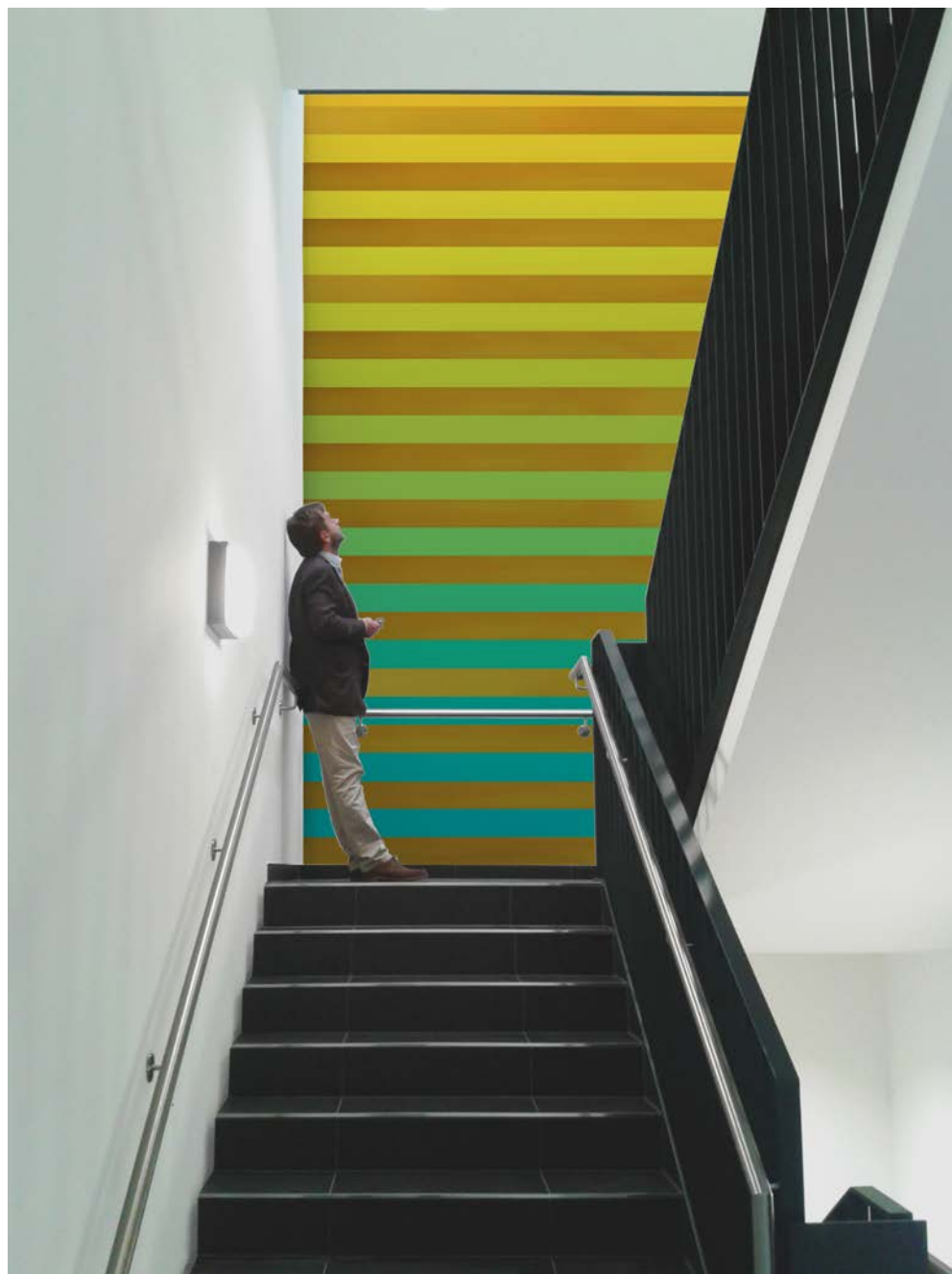
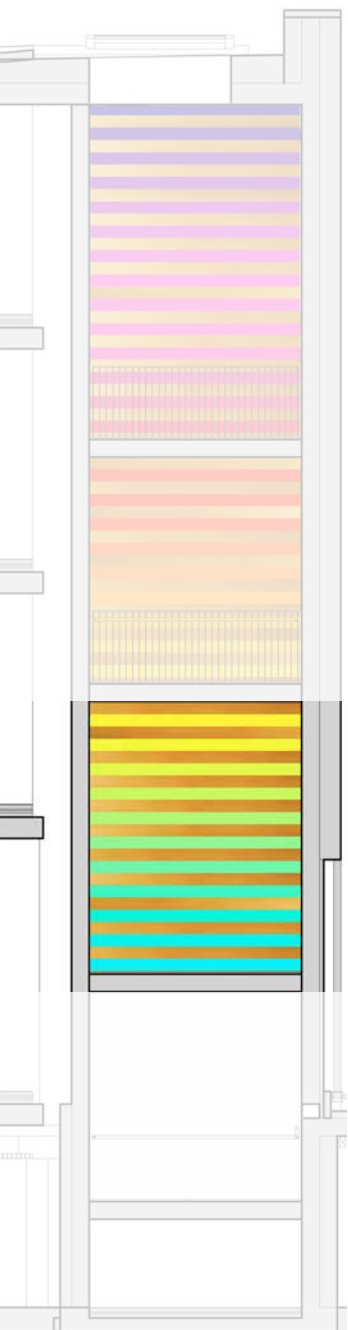






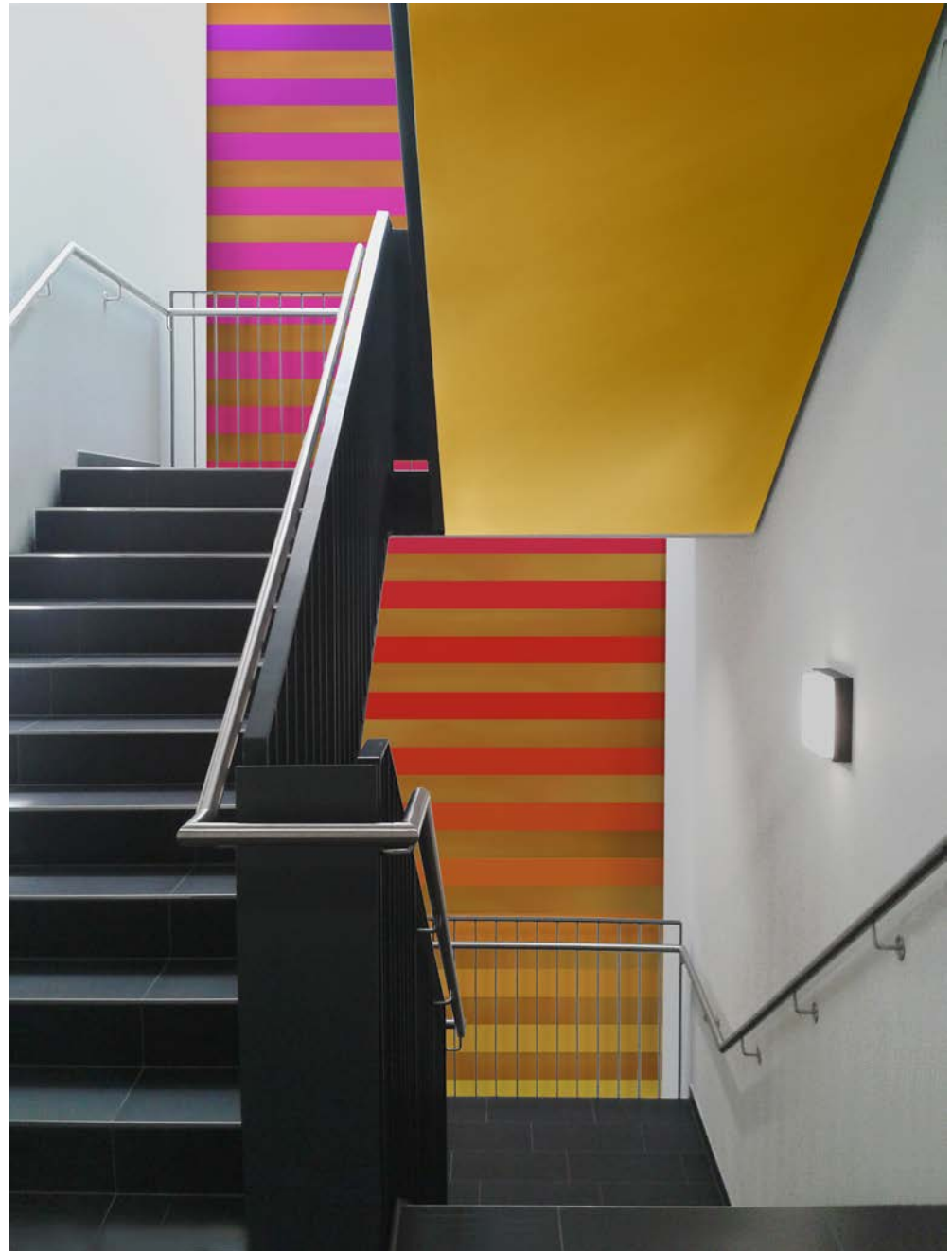


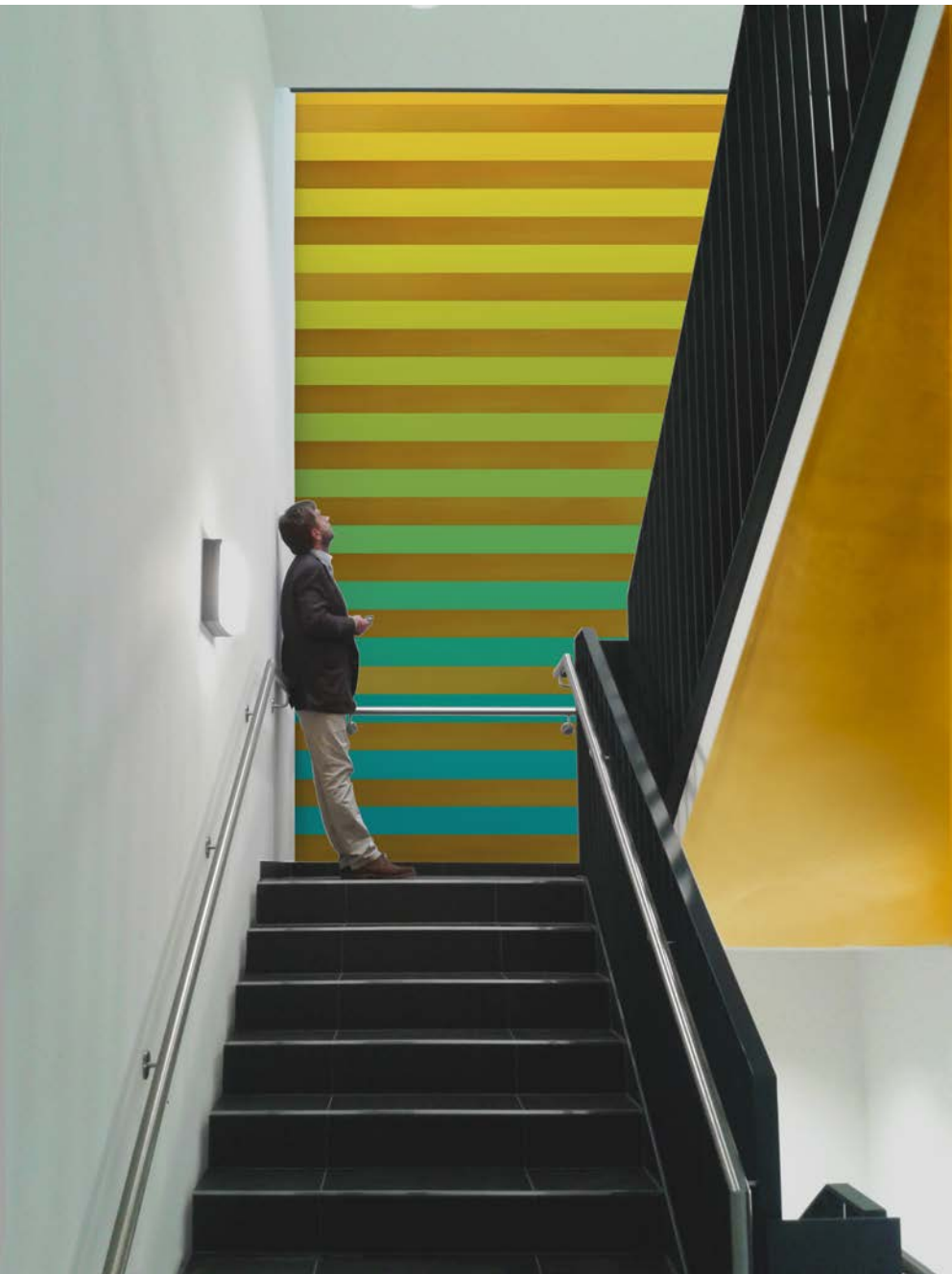




variation

In this variation also the bottom side of the stairs is painted in gold. The warmth of the golden hue pervades the entire staircase and the correlation between stairs and wall is reinforced.



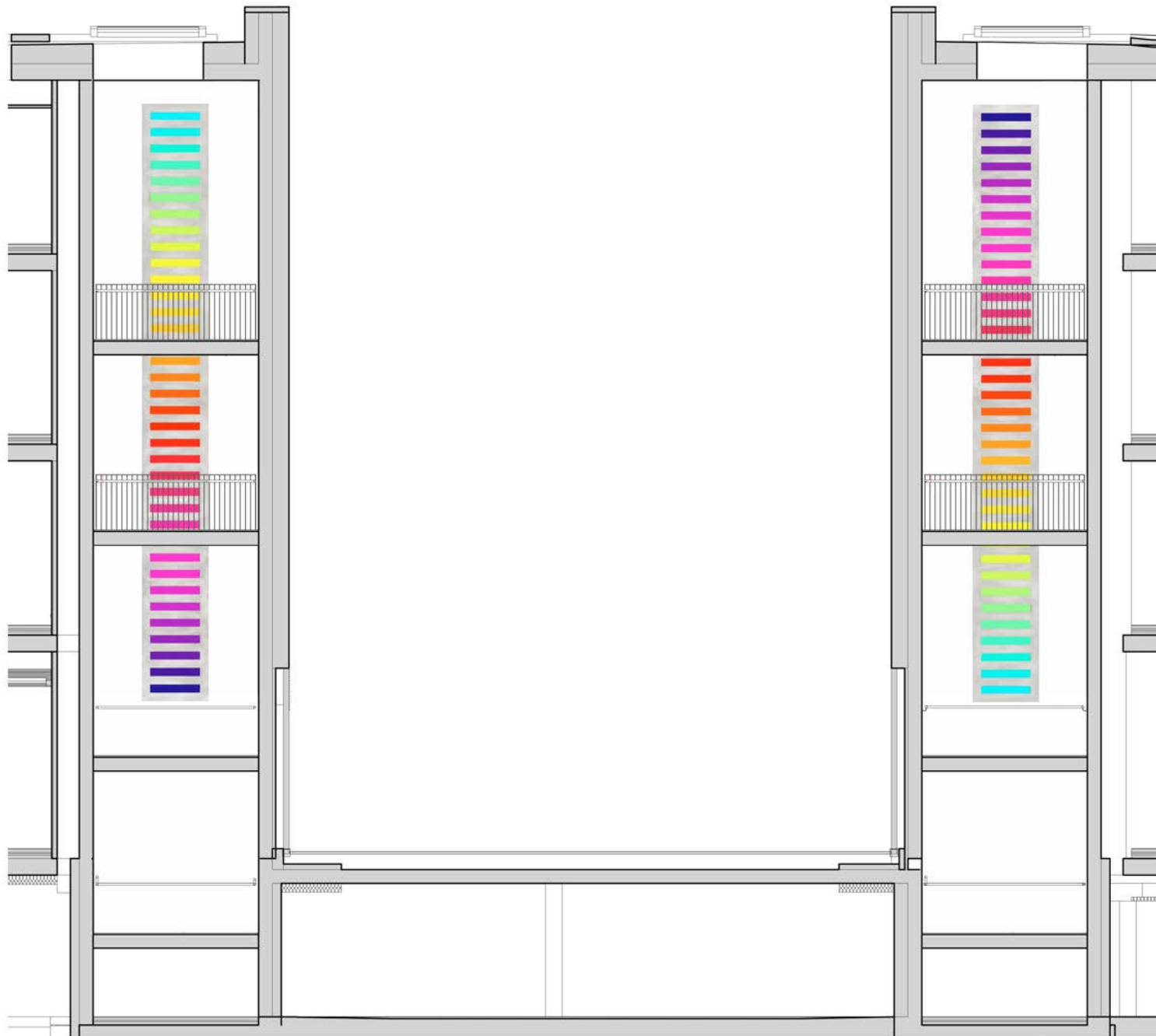


spectrum framed

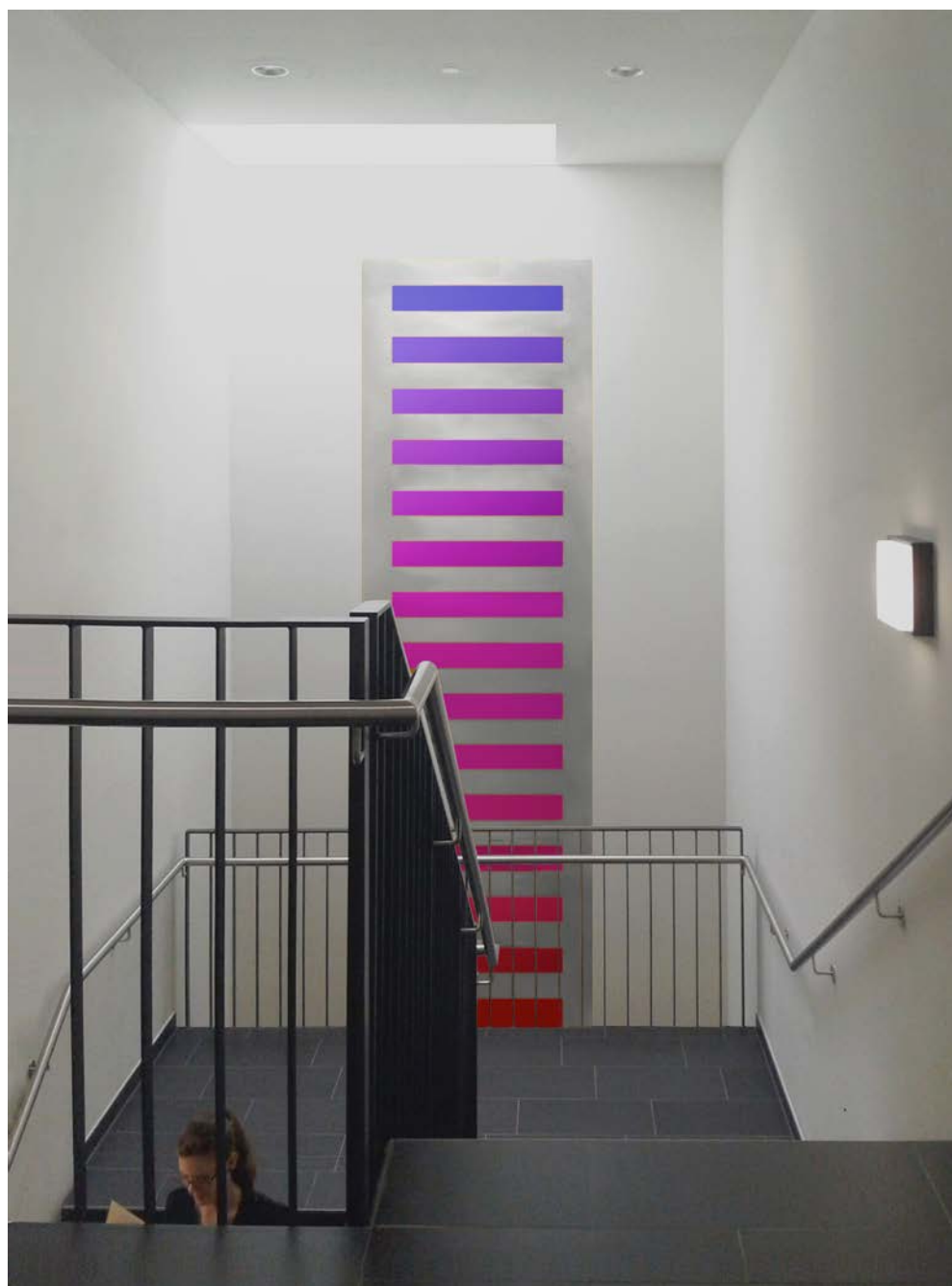
This version emphasises the pictorial aspect of the concept. Here the motif is not limited by the dimensions of the walls but consciously set into a silver frame which corresponds in proportion to the windows and takes up their rhythm on the building's façade.

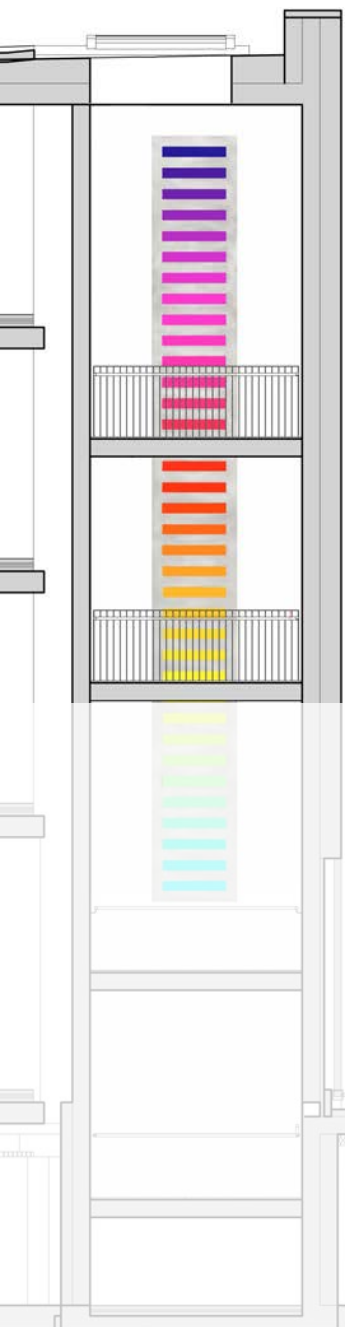
The metallic colour of the frame and the stripe echo the staircases' handrails.

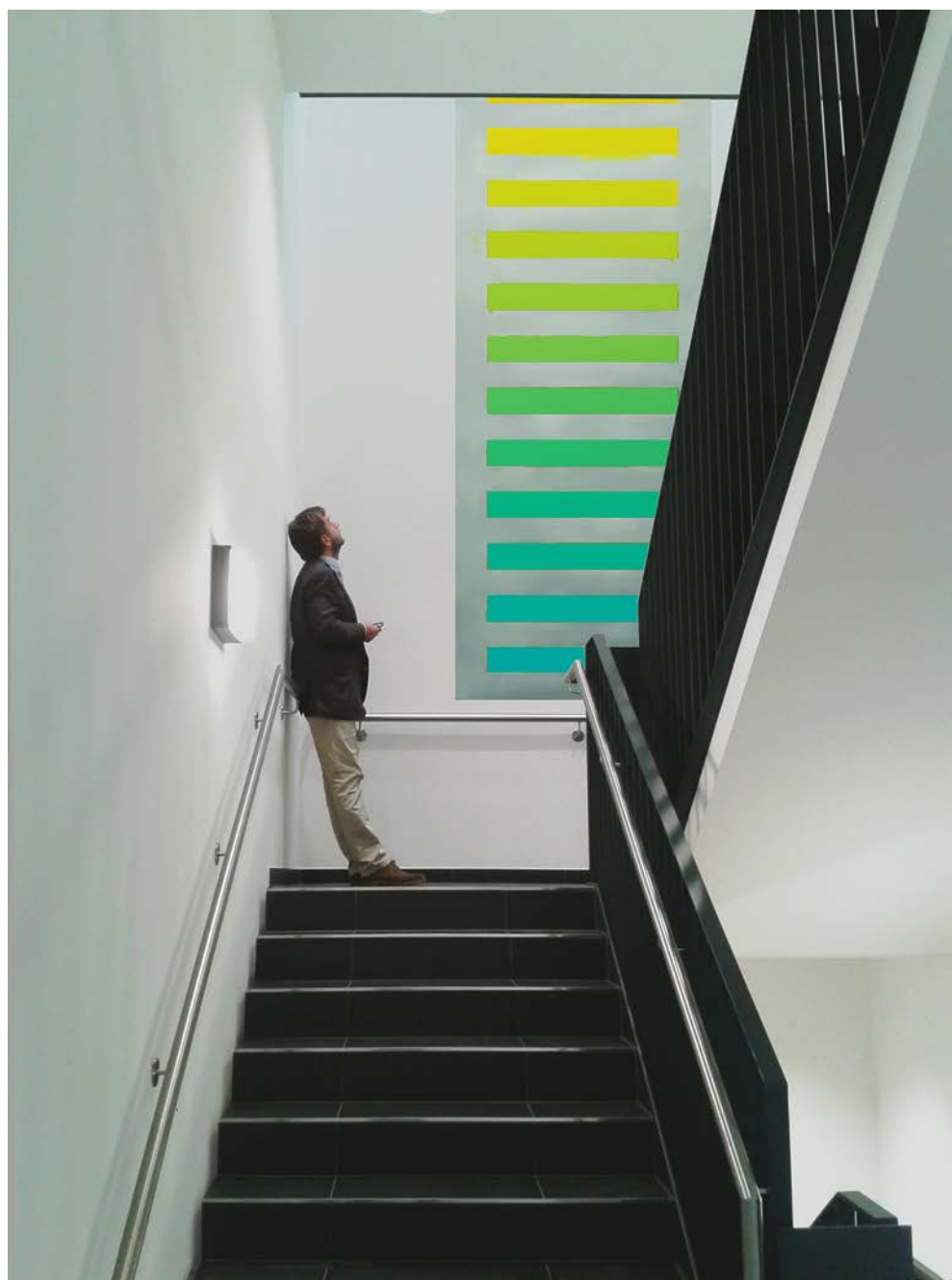
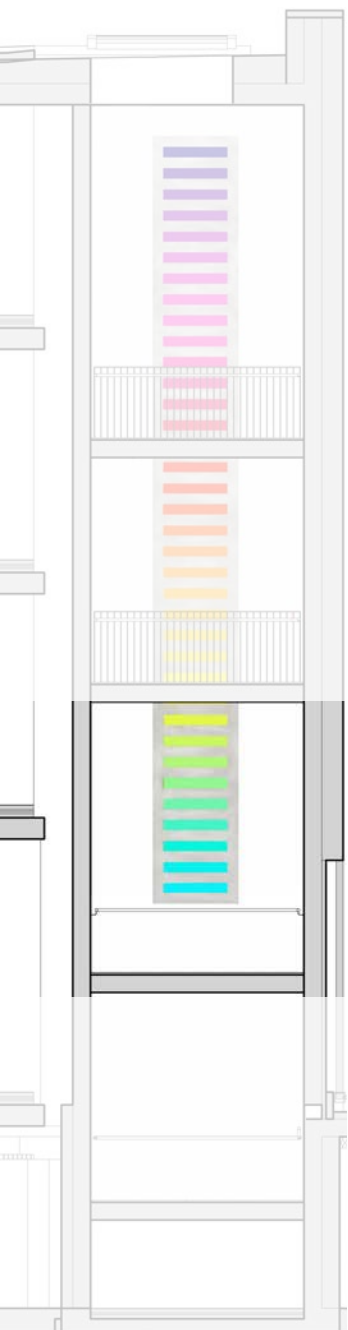
In the predominantly white and grey staircases the picture tableau is able to hold its ground as a self-contained piece of art.







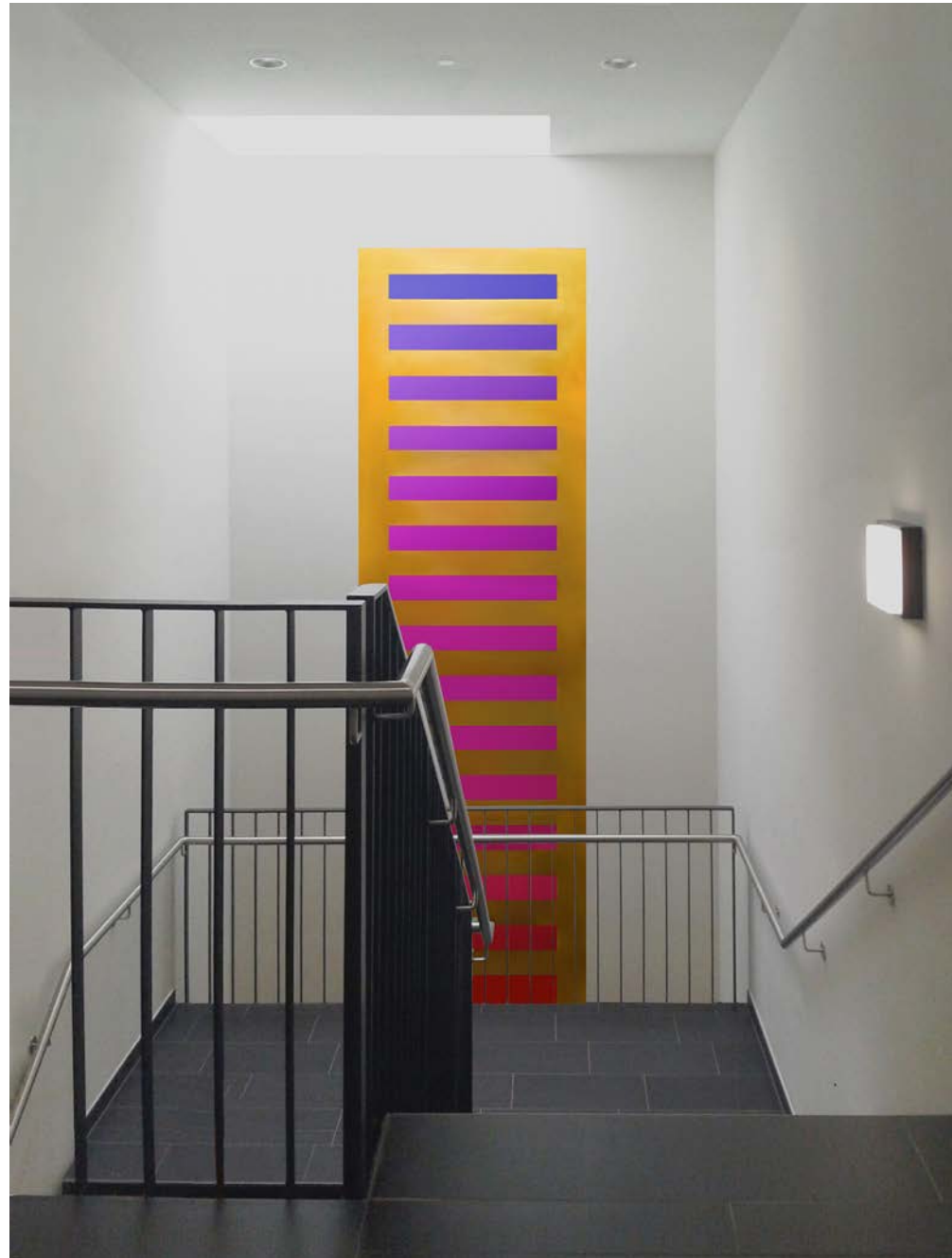




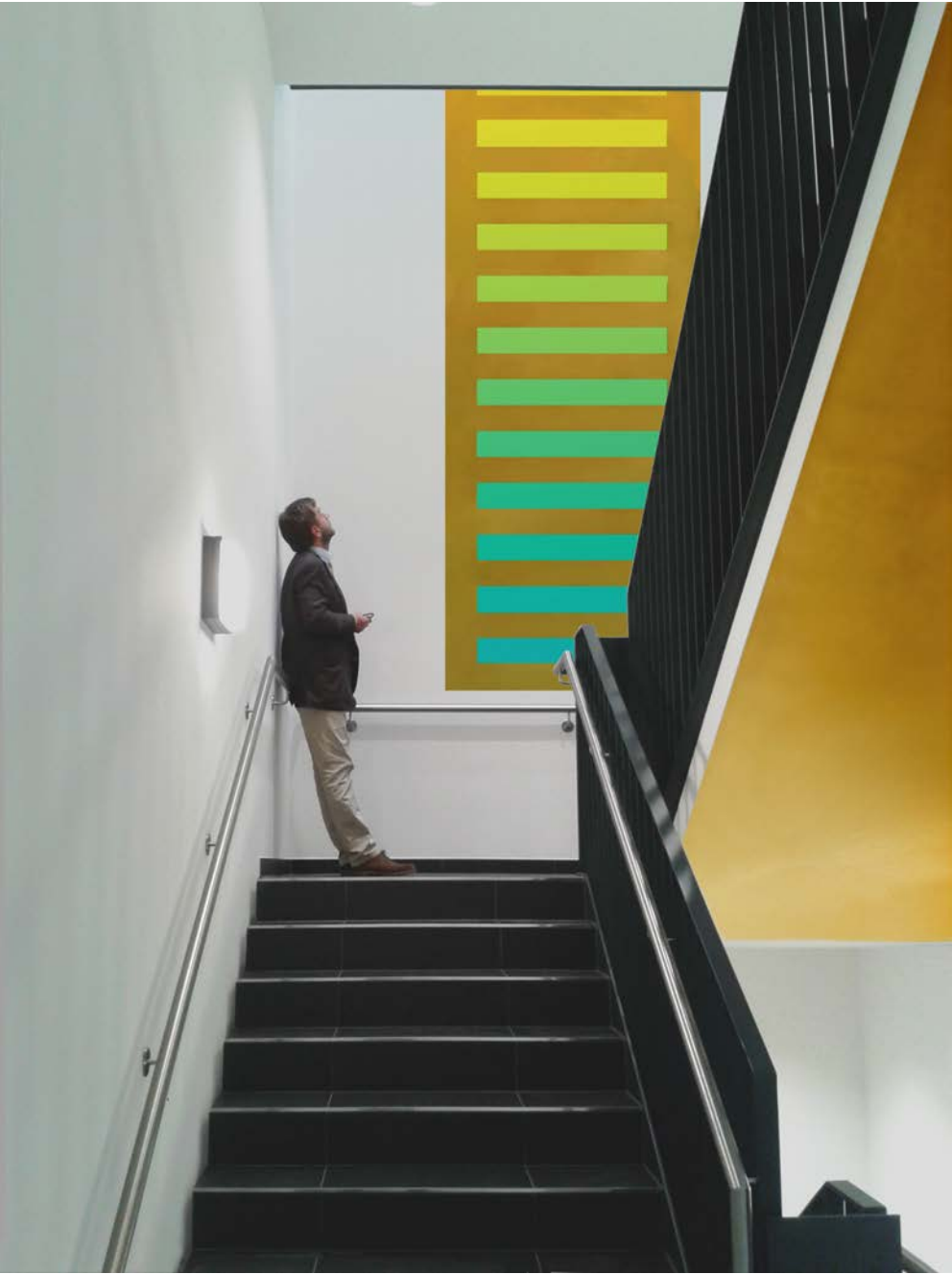
variation

In this variation the motif is set into a golden frame and the bottom side of the stairs is painted in gold.

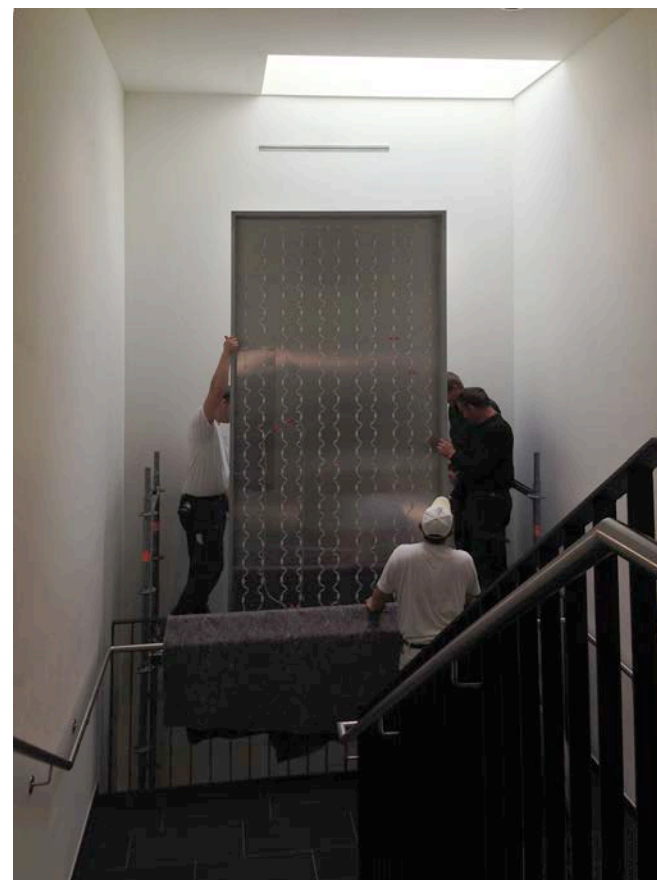
The warmth of the golden hue pervades the entire staircase and the correlation between stairs and wall is reinforced.



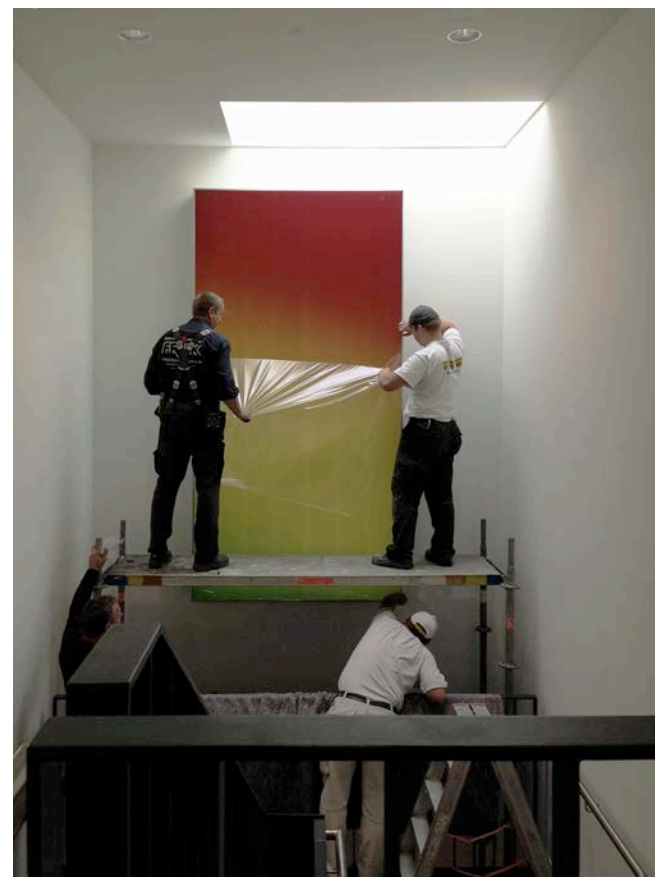
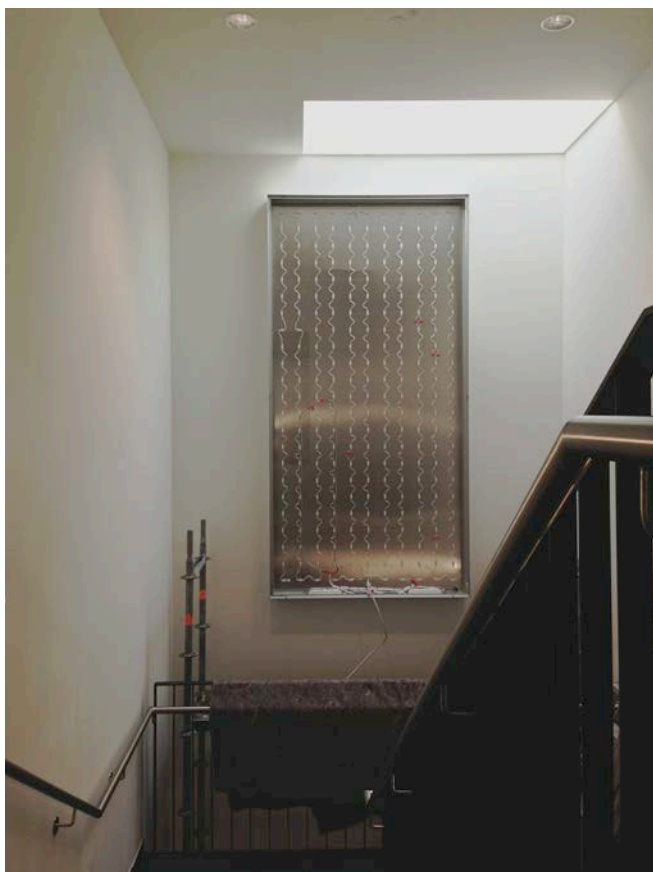




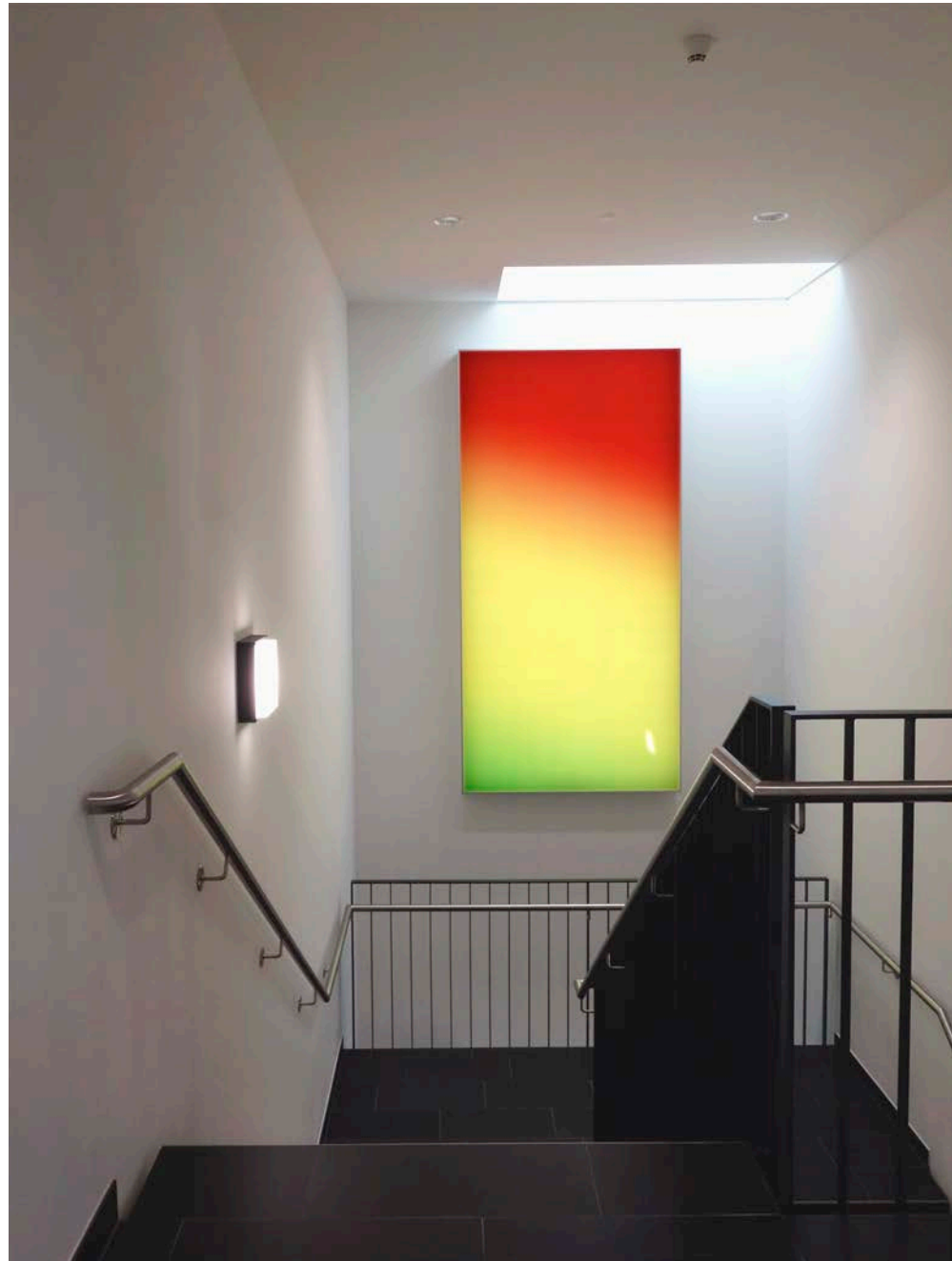
spectrum screen realisation



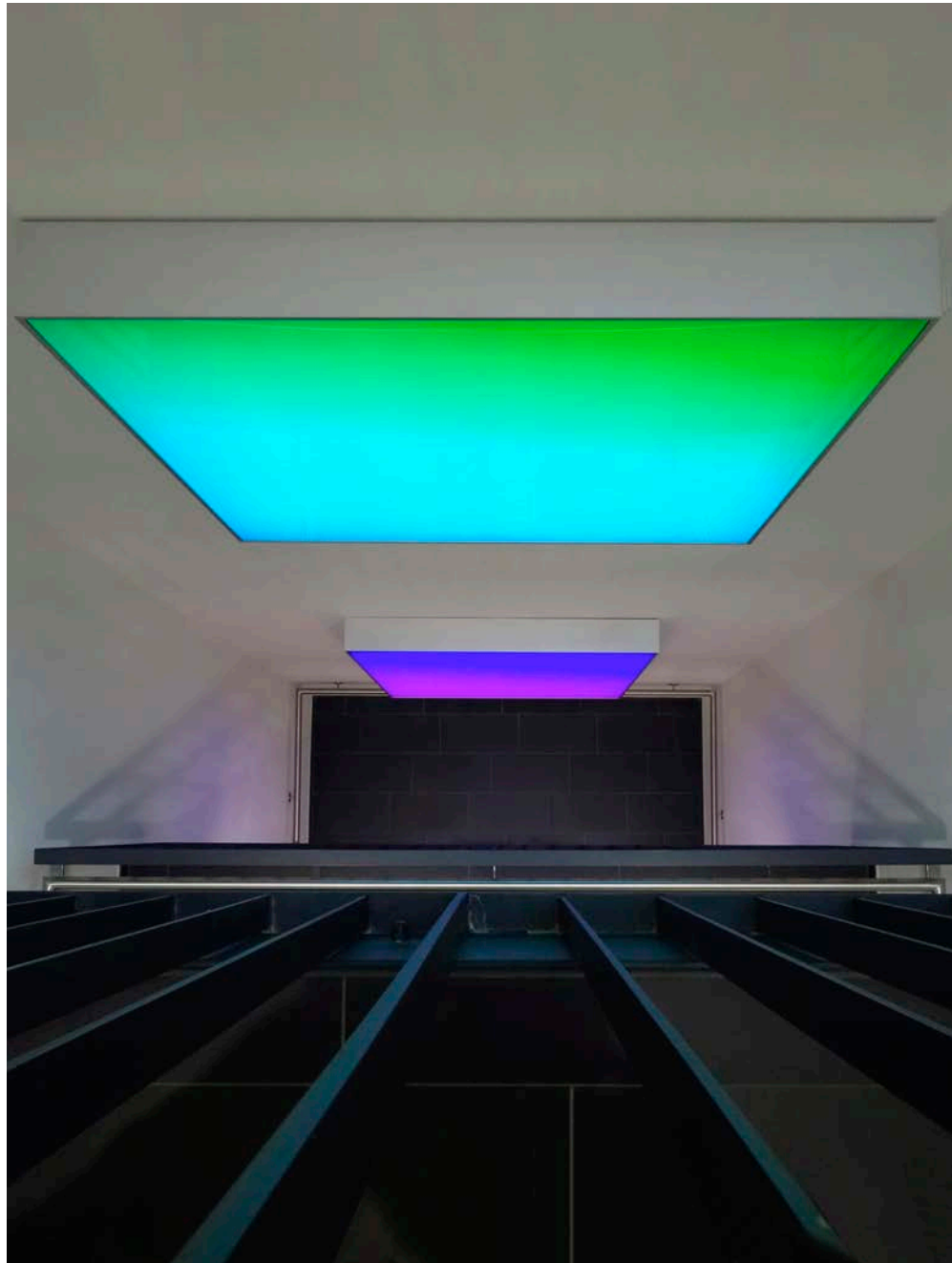
fitting of the light boxes in September 2014 carried out by Frick (Altshausen-Eichstegen)



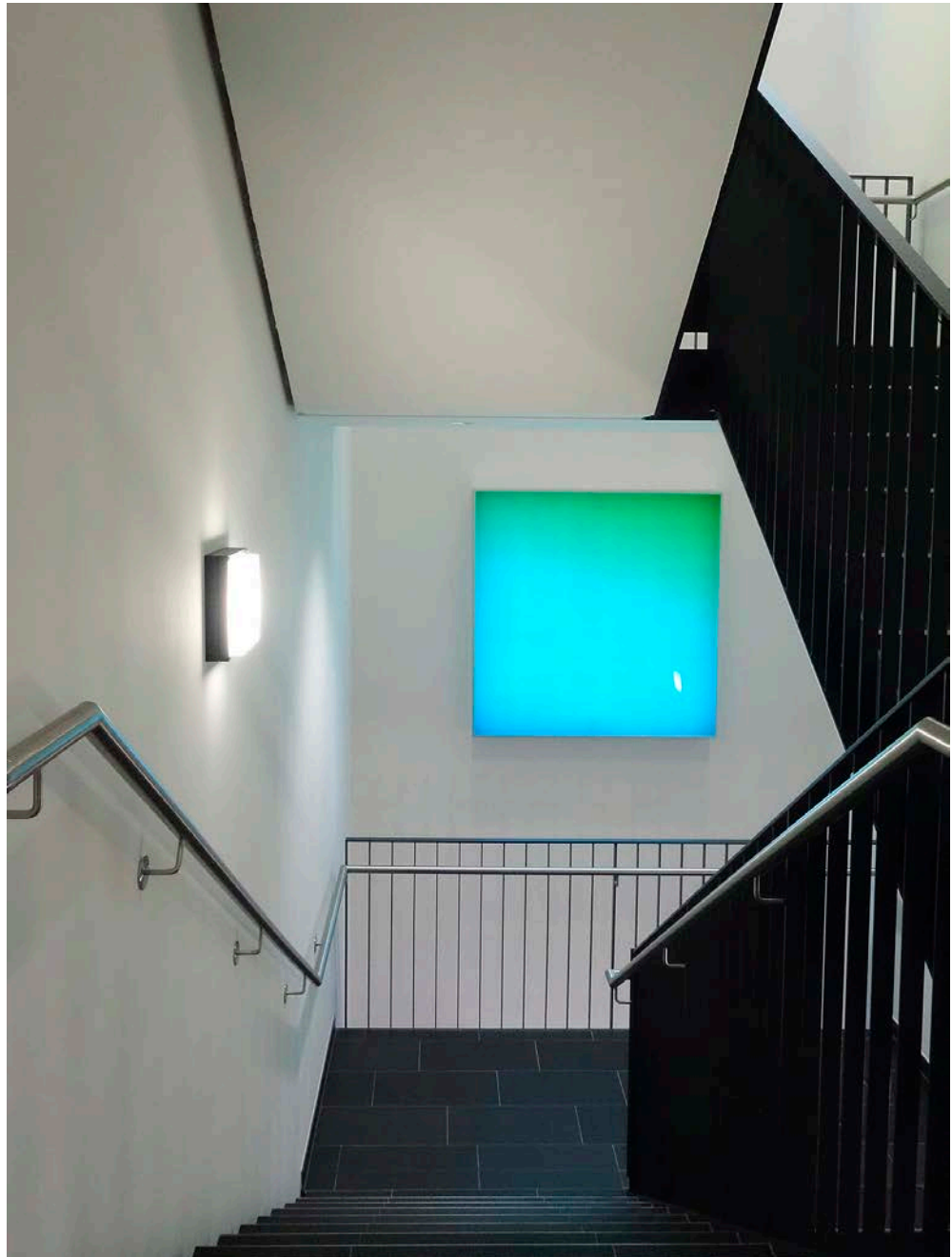
fitting of the light boxes in September 2014 carried out by Frick (Altshausen-Eichstegen)



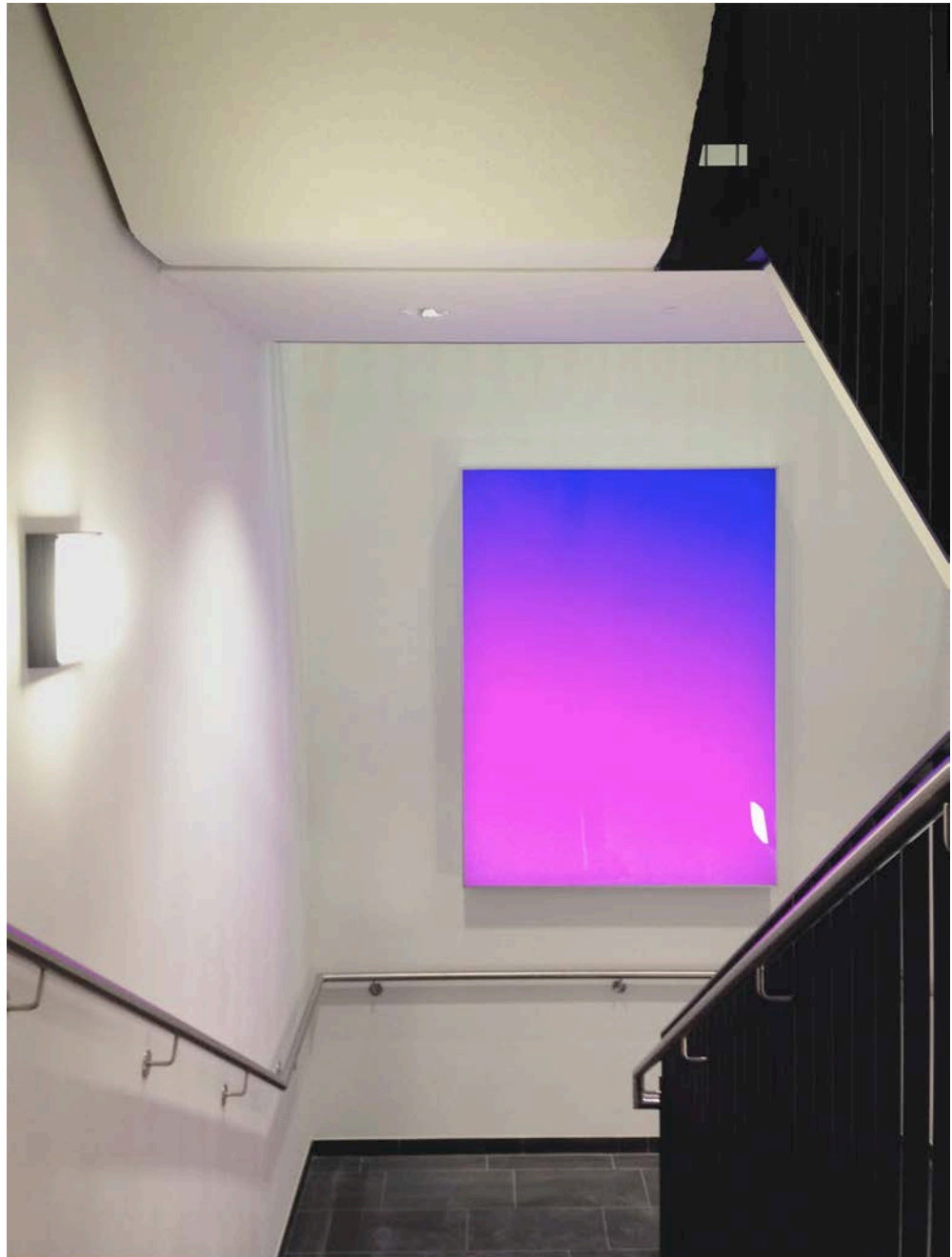
staircase 2nd floor, western stairs



staircase 1st floor, western stairs, looking down



staircase 1st floor, western stairs



staircase ground floor, western stairs



staircase ground floor, western stairs, looking up



michael luther | rigaer str. 69 | 10247 berlin | +49.(0)178.781 95 26 | office@michael-luther.net | www.michael-luther.net

